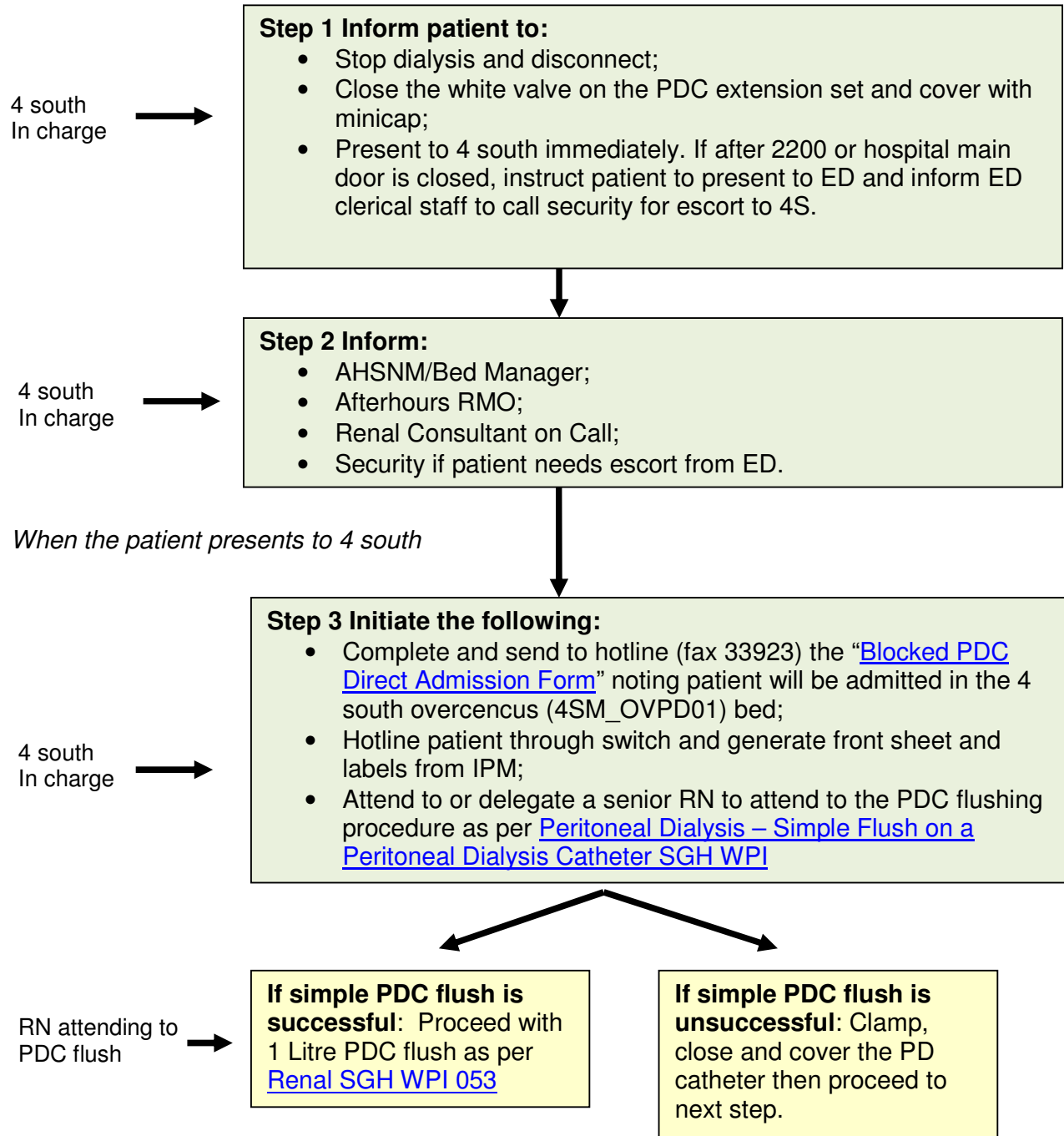


FLOWCHART

AFTERHOURS – MANAGEMENT OF POOR FLOW OR NO FLOW PERITONEAL DIALYSIS CATHETER BY 4 SOUTH

Patient/carer informs 4 south In charge of blocked or non-flowing or poor flowing peritoneal dialysis catheter (PDC)



FLOWCHART

AFTERHOURS – MANAGEMENT OF POOR FLOW OR NO FLOW PERITONEAL DIALYSIS CATHETER BY 4 SOUTH

