



# RESEARCH REPORT

2016



**RENAL DEPARTMENT  
ST GEORGE & SUTHERLAND  
HOSPITALS**

It is a great privilege to present the annual research report for 2016. I will take this opportunity to highlight some of the year's key achievements. The work done by our Renal Supportive Care and Obstetrics Medicine groups is increasingly recognised nationally and internationally. As a result, Dr Brennan and Prof Brown were invited to deliver lectures in Australia as well as overseas. A/Prof Katz and Dr Maria Chan were also invited to deliver lectures in international conferences.

Researchers at the department of Renal Medicine published 28 articles in peer-reviewed journals and two book chapters. Importantly, protocols for developing, disseminating, and implementing a core outcome set for pre-eclampsia, and the ongoing Postpartum Physiology, Psychology and Paediatric Follow Up Study (P4 Study) were published. These studies are progressing well and Dr Mangos and Pettit presented abstracts on hypertensive pregnancies in the ISSHP 2016 World Congress, which was held in Sao Paulo, Brazil.

A/Prof Badve was awarded PhD by the University of Queensland in 2016. A/Prof Badve is also affiliated with the Australasian Kidney Trials Network and the George Institute for Global Health. He is the lead-investigator of the CKD-FIX Study. This trial is evaluating the effect of allopurinol on the progression of chronic kidney disease. In just 6 months, we recruited 25 patients in this trial and our site is the second top recruiting site for this study. We envisage participating in more multicentre and collaborative studies in coming years.

Another highlight of 2016 was that several member of our nursing team published peer-reviewed manuscripts and presented abstracts in conferences. The contribution of nurses Yanella Martinez-Smith, Coralie Meek, Dr Shelley Tranter, Elizabeth Josland, Kylie Turner, Tania Burns, Jennifer Beddoe, Claire Cuesta, Emma Vella, Maria De Rueda, Fiona Robinson, Saiyini Pirabhahar; social worker Hannah Burgess and dietitian Dr Maria Chan is vital to the research output of our unit.

Finally, I would like to take this opportunity to highlight that we are committed to support our junior medical staff and medical students in developing interest and skills research. Opportunities are available for candidates interested in pursuing PhD.



A/Prof. Sunil Badve

Head of Research

St. George Renal Department



Professor Mark Brown

Director, Dept. Renal Medicine

## Head of Department

**Professor Mark Brown**

MBBS, MD, FRACP

## Senior Consultant Staff

**Associate Professor John Kelly** MBBS, MD, FRACP

**Associate Professor George Mangos** MBBS, MD, FRACP

**Associate Professor Ivor Katz** MD, MBBCh, FCP(SA), BSc Honours, PhD, FRACP

**Associate Professor Sunil Badve** MBBS, MD, DNB, FRACP, PhD, FASN

**Dr Parthasarathy Shanmugasundaram** MBBS, DM, FRACP (Conjoint Lecturer, UNSW)

**Dr Cathie Lane** B.Pharm. B.Med FRACP, Grad Cert ULT, PhD (Conjoint Lecturer, UNSW)

**Dr Franziska Pettit** MB BCh, BAO, MSci, MRCPI, FRACP

**Dr Frank Brennan** MBBS, FRACP, FACHPM, LLB- Consultant Palliative Care Medicine



## Research Staff

### Research Fellows & students

Dr Vishwas Raghunath

### Research Officers

Saiyini Pirabhahar (BNurs, MHIthSci, PGrad Dip Med Lab Sci)

Paula Williamson (RN, RM, Grad.Dip.Counselling)

Lynne Roberts (RN, MMid, MHIthSci)

### Nursing & Allied Health contributors to Research

Alison Smyth (RN, B Health Sci. (Nursing), Grad. Dip. Health Sci. (Nursing))

(Anna) Claire Cuesta (RN, BScNsg, Grad Cert Acute Care Nursing – Renal)

Elizabeth Josland (Grad Dip Nurs, MPH)

Hannah Burgess (BSocWk)

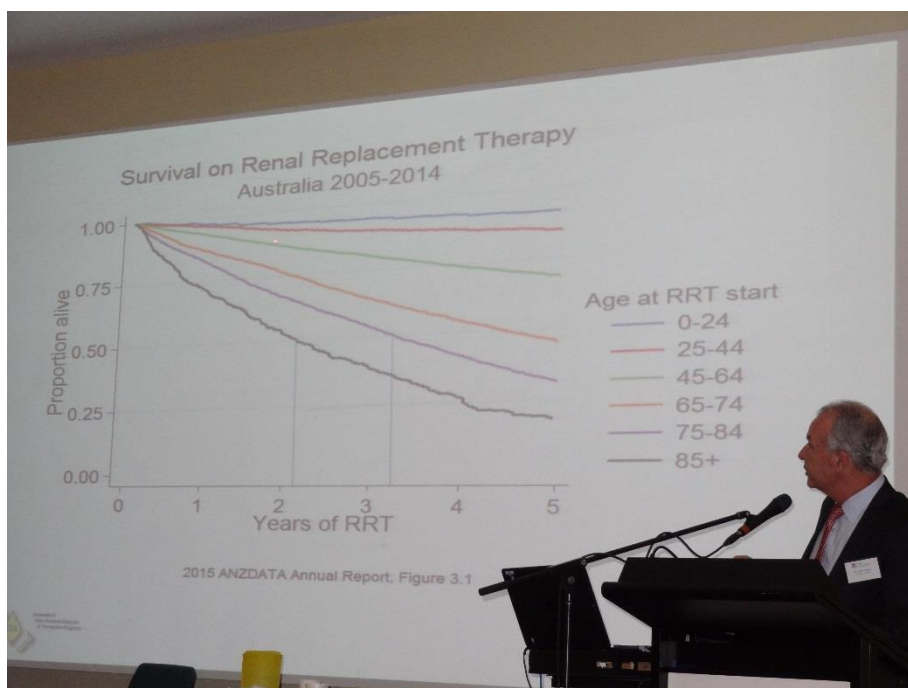
Jennifer Beddoe (BNurs, Grad. Dip. Mid)

Kylie Turner (RN, Bnurs, Grad Cert Renal Nursing)

Maria Chan (BSc(Hons), M NutrDiet, GradDipExSpSc, PhD, AdvAPD)

Tania Burns (RN, Grad Cert. Acute Care Nursing (Renal))

Yanella Martinez-Smith (BNurs, MNursAP)



## **RECENT AND ONGOING RESEARCH PROJECTS**

### **Chronic Kidney Disease (CKD)**

1. CKD-FIX study
2. Hypertension in CKD

### **Hypertension in pregnancy**

1. Body composition in post-partum women.
2. Post-partum physiology, psychology and paediatric outcomes for women with pre-eclampsia (the 'P4' study).

### **Peritoneal and Haemodialysis**

1. Peritoneal Dialysis Outcomes and Practice Patterns Study (PDOPPS)
2. Failure to mature, reduced survival and morbidity with the Fistula First Initiative for HDx access

### **Transplant**

1. Improving the renal transplant recipient inpatient experience

### **Renal Supportive Care**

1. The outcomes of patients on a Renal Supportive care pathway
2. Is true consent for dialysis always given?
3. Predicting the outcome for patients on a conservative care pathway
4. Experiences of patients and carers of people with advanced CKD on non-dialysis pathway

## PRESENTATIONS

### Invited Lectures – Local

1. **Brennan F.** Narratives from Palliative Care. Teva Conference, Sydney. January 21<sup>st</sup> 2016.
2. **Brennan F.** Ethics and End of Life Care. Medical School, Notre Dame University, Sydney. January 29<sup>th</sup> 2016.
3. **Brennan F.** Blistering Skin Disease and Pruritus. Blistering Skin Disease Conference, St George Hospital, Sydney. February 6<sup>th</sup> 2016.
4. **Brennan F.** Pain management in patients with End Stage Kidney Disease. General Practitioner Education Session, Port Macquarie. February 24<sup>th</sup> 2016.
5. **Brennan F.** The interface of Medical Oncology and Palliative Care. Basic Sciences for Oncology and Palliative Care Trainees, Sydney. February 26<sup>th</sup> 2016.
6. **Brennan F.** Pain management in patients with End Stage Kidney Disease. Department of Nephrology, St George Hospital. March 3<sup>rd</sup> 2016.
7. **Brennan F.** The debate on euthanasia – the perspective of a Palliative Care doctor. Oatley Church. March 13<sup>th</sup> 2016.
8. **Brennan F.** Symptom management in ESKD and Advance care planning in ESKD Renal Supportive Care teaching day. St George Hospital, Sydney. April 6<sup>th</sup> 2016.
9. **Brennan F.** Motor neurone disease. United Hospital Axillary. Calvary Hospital, Sydney. April 29<sup>th</sup> 2016
10. **Brennan F.** End of life care for End Stage Kidney Disease (ESKD) and Diabetes Mellitus. Master Class for Endocrinologists and Nephrologists, Sydney. May 1<sup>st</sup> 2016
11. **Brennan F.** Ethics and Palliative Care. Ethics Training Day, Palliative Care Trainees, St George Hospital. May 20<sup>th</sup> 2016.
12. **Brennan F.** Symptom management in ESKD. Department of Nephrology, Prince of Wales Hospital, Sydney. May 23<sup>rd</sup> 2016.
13. **Brennan F.** Symptom management in ESKD. Department of Nephrology, Concord Hospital, Concord, Sydney. May 26<sup>th</sup> 2016.
14. **Brennan F & Brown M.** Living Well with Chronic Disease – End Stage Kidney Disease and Renal Supportive Care – An Overview. Palliative Care Education Day, Royal Prince Alfred Hospital. May 27<sup>th</sup> 2016.
15. **Brennan F.** Mentorship in Palliative Care. Palliative Care Education Day, Royal Prince Alfred Hospital. May 27<sup>th</sup> 2016
16. **Brennan F.** Case Study. Morbidity and Mortality Meeting. Calvary Hospital. June 2<sup>nd</sup> 2016.
17. **Brennan F.** Fatigue and anorexia-cachexia. General Practitioner Education Session, Port Macquarie. June 15<sup>th</sup> 2016.
18. **Brennan F.** The nature of illness, death and bereavement. Talking Sticks Day, Redfern, Sydney. June 18<sup>th</sup> 2016.
19. **Brennan F.** The nature of Palliative Care. Calvary Hospital Volunteers, Calvary Hospital. June 22<sup>nd</sup> 2016.
20. **Brennan F.** Panel discussion on Clinical Ethics. Grand Rounds, St George Hospital. June 27<sup>th</sup> 2016.
21. **Brennan F.** Symptom management in ESKD. Department of Nephrology, Wollongong Hospital, Wollongong. July 8<sup>th</sup> 2016

22. **Brennan F.** Pain management in End Stage Kidney Disease. NSW Society of Hospital Pharmacists, University of Sydney. July 16<sup>th</sup> 2016.
23. **Brennan F.** Complex symptom management in End Stage Kidney Disease (ESKD). Renal Supportive Care Symposium, St George Hospital. July 29<sup>th</sup> 2016.
24. **Brennan F.** Panel Discussion – Case Studies with ethical issues, symptom management and other topics. Renal Supportive Care Symposium, St George Hospital. July 29<sup>th</sup> 2016.
25. **Brennan F.** Pain and End Stage Kidney Disease – An Overview. Pain management and End Stage Kidney Disease – A Symposium, St George Hospital. Co-organiser and convenor of Symposium. July 30<sup>th</sup> 2016.
26. **Brennan F.** Pain in polycystic kidney disease, intradialytic and carpal tunnel syndrome. Pain management and End Stage Kidney Disease – A Symposium, St George Hospital. Co-organiser and convenor of Symposium. July 30<sup>th</sup> 2016.
27. **Brennan F.** Pathogenesis of pruritus. Part 1. Department of Dermatology, St George Hospital. August 3<sup>rd</sup> 2016.
28. **Brennan F.** Pathogenesis of pruritus. Part 2. Department of Dermatology, St George Hospital. August 17<sup>th</sup> 2016.
29. **Brennan F.** The experience of being a doctor in Australia and overseas. Medical students, University of New England, Armidale. August 17<sup>th</sup> 2016.
30. **Brennan F.** Palliative Care with dementia. Living Well With Dementia Day, Alzheimer Australia. August 22<sup>nd</sup> 2016.
31. **Brennan F.** The nature of Palliative Care. Department of Geriatrics, Nepean Hospital, Penrith. August 26<sup>th</sup>
32. **Brennan F.** Management of pruritus. Department of Dermatology, St George Hospital. September 14<sup>th</sup> 2016.
33. **Brennan F.** Motor Neurone Disease. Calvary Hospital Community Health staff. September 26<sup>th</sup> 2016.
34. **Brennan F.** Palliative Care in Residential Aged Care Facilities. General Practitioner, St George Hospital. October 6<sup>th</sup> 2016.
35. **Brennan F.** The nature of dying. Ethics Interest Group. University of NSW. October 13<sup>th</sup> 2016.
36. **Brennan F.** Difficult symptoms in Palliative Care – pruritus and hiccups. NSW Palliative Care Conference, Broken Hill. October 14<sup>th</sup> 2016.
37. **Brennan F.** Cardiology and Palliative Care. General Practitioner Education Session, Port Macquarie. October 26<sup>th</sup> 2016.
38. **Brennan F.** Motor Neurone Disease (MND) – an Overview. Living with Motor Neurone Disease Day, NSW Motor Neurone Disease Association. November 2<sup>nd</sup> 2016.
39. **Brennan F.** Informed consent. Junior Medical Officers, St George Hospital. November 16<sup>th</sup> 2016.
40. **Brennan F.** A short reflection on Leonard Cohen. Communication, End of Life and Dignity Day, facilitated by Professor Harvey Chochinov, Light House Cancer Centre, Royal Prince Alfred Hospital. November 24<sup>th</sup> 2016.
41. **Brown M.** What is Renal Supportive Care? NSW Renal Dieticians Interest group. St. George Hospital. March 8<sup>th</sup> 2016.
42. **Brown M.** NSW Renal Supportive Care Program. ACI Renal Network Annual Forum. Sydney. NSW. March 16<sup>th</sup> 2016.
43. **Brown M.** Decision making: when is dialysis the right pathway? Orange Hospital. Orange. NSW. April 15<sup>th</sup> 2016.

44. **Brown M.** Decision making around dialysis. Prince of Wales Renal Department. May 23<sup>rd</sup> 2016.
45. **Brown M.** Decision making around dialysis. Concord Hospital. NSW. May 26<sup>th</sup> 2016.
46. **Brown M.** Renal Supportive Care Update. Palliative Care NSW Professional Education Annual Forum. Royal Prince Alfred hospital. Sydney. NSW. May 27<sup>th</sup> 2016.
47. **Brown M.** Decision making: when is dialysis the right pathway? Dept. Renal Medicine. Wollongong Hospital. NSW. July 8<sup>th</sup> 2016.
48. **Brown M.** New developments in Renal Supportive Care. 7<sup>th</sup> Renal Supportive Care Symposium. St. George Hospital. Sydney. July 29<sup>th</sup> 2016
49. **Brown M.** Dilemma of consent for Renal Replacement Therapy. 7<sup>th</sup> Renal Supportive Care Symposium. St. George Hospital. Sydney. July 29<sup>th</sup> 2016
50. **Brown M.** Renal Supportive Care in 2016. Sydney Institute of Palliative Medicine 25<sup>th</sup> Annual Symposium Concord Hospital. Sydney. Sept 23<sup>rd</sup> 2016.
51. **Chan M.** 7 point scale Subjective Global Assessment (SGA), Renal Nutrition Education day. NSW Renal dietitians group, St. George Hospital, Sydney. 2016





## Invited Lectures – National

1. **Brennan F.** *The moral right to pain management.* Catholic Bioethics Colloquium, John Paul II Institute, Melbourne. February 2<sup>nd</sup> 2016.
2. **Brennan F.** *Symptom management in ESKD.* Kidney Supportive Care Master Class, Royal Brisbane and Womens' Hospital, Brisbane. August 6<sup>th</sup> 2016.
3. **Brennan F.** *The interface of Oncology and Palliative Care.* Master Class in Palliative Care, Clinical Oncology Society of Australia (CPOSA), Gold Coast, Queensland. Co-organiser and convenor of Master Class. November 14<sup>th</sup> 2016.
4. **Brennan F.** The care of the dying patient. (co-presented with Joan Ryan) Master Class in Palliative Care, Clinical Oncology Society of Australia (CPOSA), Gold Coast, Queensland. November 14<sup>th</sup> 2016.
5. **Brennan F.** *End of life care for End Stage Kidney Disease and diabetes.* Master Class on Diabetes and Vascular Medicine. Melbourne. November 16<sup>th</sup> 2016.
6. **Brennan F and Brown M.** *The ethos of Renal Supportive Care.* Presented on behalf of Professor Mark Brown. Department of Nephrology, Gold Coast University Hospital. November 30<sup>th</sup> 2016.
7. **Brennan F.** *Pain management in End Stage Kidney Disease (ESKD).* Department of Nephrology, Gold Coast University Hospital. December 1<sup>st</sup> 2016.
8. **Brennan F.** *Advance Care Planning in End Stage Kidney Disease (ESKD).* Department of Nephrology, Gold Coast University Hospital. December 1<sup>st</sup> 2016.
9. **Brennan F.** *Renal Supportive Care – the trials and tribulations of establishing a service.* Presented on behalf of Professor Mark Brown. Grand Rounds, Gold Coast University Hospital. December 1<sup>st</sup> 2016.
10. **Brennan F.** *Renal Supportive Care – what other disciplines could learn.* Grand Rounds, Gold Coast University Hospital. December 1<sup>st</sup> 2016.
11. **Brown M.** *The ethos of kidney supportive care.* Kidney Supportive Care Masterclass. Royal Brisbane & Women's hospital. Brisbane. Qld. Aug 6<sup>th</sup> 2016.
12. **Brown M.** *Renal Supportive Care in Australia: a new paradigm for Palliative Care.* St Vincent's Health Australia End of Life Care Forum. Melbourne. Sept 2<sup>nd</sup> 2016.
13. **Brown M.** *Controversies in pre-eclampsia.* IMSANZ & SOMANZ conference Alice Springs. Sept 15<sup>th</sup> 2016.
14. **Brown M.** *Chronic Hypertension in Pregnancy.* IMSANZ & SOMANZ conference. Alice Springs. Sept 15<sup>th</sup> 2016.

## Invited Lectures – International

1. **Brennan F.** *Reflection on the film "Love in our own time".* International Palliative Care Conference, Montreal, Canada. October 20<sup>th</sup> 2016.
2. **Brown M.** *What's new in Pregnancy Hypertension?* ISSHP 2016 World Congress. Sao Paulo. Brazil. October 23<sup>rd</sup> 2016.
3. **Brown M.** *Hypertensive Pregnancy: International views on Diagnosis & Management.* ISSHP 2016 World Congress. Sao Paulo. Brazil. 26th October. 2016
4. **Chan M.** 3<sup>rd</sup> Renal Nutrition Seminar (for doctors, dietitians and nurses), National Kidney Foundation, Malaysia (Kuala Lumpur, Malaysia), June, 2016.
5. **Chan M.** Nutrition screening in managing kidney diseases, 18th International Congress

- of Nutrition and Metabolism in Renal Disease (Okinawa, Japan), April 2016.
6. **Chan M.** Managing Malnourished Hemodialysis Patients. Pre-congress Total Nutrition Therapy workshop (for doctors, dietitians and nurses), 18th International Congress of Nutrition and Metabolism in Renal Disease (Okinawa, Japan), April 2016.
  7. **Katz IJ.** *What is Renal Supportive Care – Developing a Service.* National Renal Care Symposium. Johannesburg. South Africa. September 14th 2016.
  8. **Katz IJ.** *What is Renal Supportive Care – Developing a Service.* Steve Biko Pretoria Academic Hospital, Pretoria. South Africa. September 15<sup>th</sup> 2016
  9. **Katz IJ.** Optimising vascular dialysis access on haemodialysis. Steve Biko Pretoria Academic Hospital. Pretoria. South Africa. September 15<sup>th</sup> 2016

## Presentations of Research at Scientific Meetings

### Local

1. **Pettit F, Brown M, Davis G, Henry A, Mangos GJ.** Central blood pressure and arterial stiffness in hypertensive pregnancies. St George and Sutherland Hospital Research Symposium. September 2016.
2. **Pettit F Brown M, Davis G, Henry A, Mangos GJ.** Body composition and volume distribution in normal and hypertensive pregnancies. St George and Sutherland Hospital Research Symposium. September 2016.

### National

1. **Burns T.** Waiting for a kidney transplant from a deceased donor – a qualitative study, Renal Society of Australasia conference, Gold Coast, June 20<sup>th</sup> 2016.
2. **Chan M.** The 1, 2, 3 of counting fluids (poster presentation), 52<sup>nd</sup> ANZSN annual scientific meeting, Perth 2016.
3. **Cuesta AC, Vella E, De Rueda M, Robinson F, Tranter S.** A Practical Guide for Clinic Review of Peritoneal Dialysis Patients. International Society of Peritoneal Dialysis Conference. Melbourne. February 2016.
4. **Cuesta AC.** Peritoneal dialysis catheter insertion: a review of procedural outcome. Annual Society of Australasia conference in Gold Coast. June 2016.
5. **Cuesta AC, Vella E, De Rueda M, Robinson F.** The Peritoneal dialysis mentorship program. Annual Society of Australasia conference in Gold Coast. June 2016.
6. **Pettit F, Brown M, Davis G, Henry A, Mangos GJ.** Central blood pressure and arterial stiffness in hypertensive pregnancies. SOMANZ Alice Springs September 2016.
7. **Pettit F Brown M, Davis G, Henry A, Mangos GJ.** Body composition and volume distribution in normal and hypertensive pregnancies. SOMANZ Alice Springs September 2016.
8. **Raghunath V, Pirabhahar S, Williamson P, Kelly J, O’Sullivan A, Youssef G, C Lane, Ong S, Brennan F, Josland L, Mangos G, Shanmungasundaram P, Tranter S, Brown M, Katz IJ.** *iConnect Care CKD – A Web-Based Chronic Kidney Disease Program – Qualitative Evaluation.* ANZSN Meeting September 2017. Perth

9. **Raghunath V, Katz I.** *A tale of muscles and the kidneys – recurring rhabdomyolysis and renal impairment.* SOMANZ meeting. October 2016
10. **Martinez-Smith Y.** The Impact of a dedicated Vascular Access Nurse on Haemodialysis access outcomes. Annual Society of Australasia conference in Gold Coast. June 2016.

## International

1. Clark C, Fabian J, Gaylard P, **Katz I.** The initiation of a Shared Care and Home Haemodialysis program in South Africa. South African Renal Society Meeting. Cape Town. September 2017.
2. **Katz IJ, Josland E, Hoffman A, Burgess H, Smyth A, Stevenson J, Brown M Brennan F.** Symptom Control Management for Patients With Renal Disease –The St George And Sutherland Hospitals Renal Supportive Care (RSC) Service. South African Renal Society Meeting. Cape Town. September 2017.
3. **Martinez-Smith Y, Meek C, Katz IJ.** *Improving Rates of vascular access at dialysis start and reducing morbidity and mortality – The St George Hospital Experience in Australia.* South African Renal Society Meeting. Cape Town. September 2017.
4. **Pettit F, Brown M, Davis G, Henry A, Mangos GJ.** Central blood pressure and arterial stiffness in hypertensive pregnancies. ISSHP 2016 World Congress. Sao Paulo. Brazil. October 2016.
5. **Pettit F Brown M, Davis G, Henry A, Mangos GJ.** Body composition and volume distribution in normal and hypertensive pregnancies. ISSHP 2016 World Congress. Sao Paulo. Brazil. October 2016.
6. **Raghunath V, Pirabhar S, Williamson P, Kelly J, O’sullivan A, Youssef G, Ong S, Brennan F, Katz IJ.** iConnect Care – A Web-Based Chronic Kidney Disease Virtual Consultation Program. ASN Meeting. Chicago November 2017.

## PUBLICATIONS

### General Nephrology

1. **Badve SV,** Palmer SC, Hawley CM, Pascoe EM, Strippoli GF, Johnson DW. Glomerular filtration rate decline as a surrogate end point in kidney disease progression trials. *Nephrol Dial Transplant.* 2016 Sep;31(9):1425-36.
2. **Badve SV,** Palmer SC, Strippoli GF, Roberts MA, Teixeira-Pinto A, Boudville N, Cass A, Hawley CM, Hiremath SS, Pascoe EM, Perkovic V, Whalley GA, Craig JC, Johnson DW. The Validity of Left Ventricular Mass as a Surrogate End Point for All-Cause and Cardiovascular Mortality Outcomes in People With CKD: A Systematic Review and Meta-analysis. *Am J Kidney Dis.* 2016 Oct;68(4):554-63.
3. **Badve SV,** Pascoe EM, Burke M, Clayton PA, Campbell SB, Hawley CM, Lim WH, McDonald SP, Wong G, Johnson DW. Mammalian Target of Rapamycin Inhibitors and Clinical Outcomes in Adult Kidney Transplant Recipients. *Clin J Am Soc Nephrol.* 2016 Oct 7;11(10):1845-1855.

4. **Brown MA.** Editorial: Planning dialysis care: you might be surprised. Am J Kidney Disease. 2016; 68: 8-10.
5. **Chan M.** Protein-Controlled versus restricted protein versus low protein diets in managing patients with non-dialysis chronic kidney disease: a single centre experience in Australia. BMC Nephrology. BMC Nephrology 2016 17:129.
6. Fortnum D, Kinrade T, Mahony E, **Burgess H**, Maxwell A. Scope of Renal Social Work Role in Australia. Focus: Social Work 2016; 1(1): 34-36
7. Gummer J, Trengove R, Pascoe EM, **Badve SV**, Cass A, Clarke P, McDonald SP, Morrish AT, Pedagogos E, Perkovic V, Reidlinger D, Scaria A, Walker R, Vergara LA, Hawley CM, Johnson DW, Olynyk JK, Ferrari P; HERO Study Collaborative Group. Association between Serum Hcpidin-25 and Primary Resistance to Erythropoiesis Stimulating Agents in Chronic Kidney Disease: A Secondary Analysis of the HERO Trial. Nephrology (Carlton). 2016 May 12. doi: 10.1111/nep.12815.
8. Lan PG, Clayton PA, Johnson DW, McDonald SP, Borlace M, **Badve SV**, Sud K, Boudville N. Duration of Hemodialysis Following Peritoneal Dialysis Cessation in Australia and New Zealand: Proposal for a Standardized Definition of Technique Failure. Perit Dial Int. 2016 11-12;36(6):623-630.
9. **Lane C, Pirabhar S**, Robins J, Tranter S, **Brown M, Katz I.** Improving nephrology service delivery in an Australian metropolitan tertiary hospital. Accessing the specialist. A new look at an old problem. Australian Family Physician. 2016. 45: 223-228.
10. **Martinez-Smith.** Buttonhole Cannulation: Current Prospects and Challenges. Book review. Renal Society of Australasia Journal. 2016. Vol 12(2), pp72-73
11. **Martinez-Smith.** The impact of a dedicated Vascular Access Nurse on HDx Access Outcomes. Australian Vascular Access Society Journal 2016.
12. Palmer SC, Mavridis D, Nicolucci A, Johnson DW, Tonelli M, Craig JC, Maggo J, Gray V, De Berardis G, Ruospo M, Natale P, Saglimbene V, **Badve SV**, Cho Y, Nadeau-Fredette AC, Burke M, Faruque L, Lloyd A, Ahmad N, Liu Y, Tiv S, Wiebe N, Strippoli GF. Comparison of Clinical Outcomes and Adverse Events Associated With Glucose-Lowering Drugs in Patients With Type 2 Diabetes: A Meta-analysis. JAMA. 2016 Jul 19;316(3):313-24.
13. Nadeau-Fredette AC, Johnson DW, Hawley CM, Pascoe EM, Cho Y, Clayton PA, Borlace M, **Badve SV**, Sud K, Boudville N, McDonald SP. Center-Specific Factors Associated with Peritonitis Risk-A Multi-Center Registry Analysis. Perit Dial Int. 2016 9-10;36(5):509-18.
14. Roberts MA, Pilmore HL, Ierino FL, **Badve SV**, Cass A, Garg AX, Isbel NM, Krum H, Pascoe EM, Perkovic V, Scaria A, Tonkin AM, Vergara LA, Hawley CM; BLOCADE Study Collaborative Group. The  $\beta$ -Blocker to Lower Cardiovascular Dialysis Events (BLOCADE) Feasibility Study: A Randomized Controlled Trial. Am J Kidney Dis. 2016 Jun;67(6):902-11.
15. Sukkar L, Hong D, Wong MG, **Badve SV**, Rogers K, Perkovic V, Walsh M, Yu X, Hillis GS, Gallagher M, Jardine M. Effects of ischaemic conditioning on major clinical outcomes in people undergoing invasive procedures: systematic review and meta-analysis. BMJ. 2016 Nov 7;355:i5599. doi: 10.1136/bmj.i5599.
16. **Tranter S, Josland E, Turner K.** Nurses' bereavement needs and attitudes towards patient death: a qualitative descriptive study of nurses in a dialysis unit. Journal of Renal Care 42(2), 101-106.

17. Viecelli AK, Pascoe EM, Polkinghorne KR, Hawley CM, Paul-Brent PA, **Badve SV**, Cass A, Johnson DW, Kerr PG, Mori TA, Scaria A, Hooi LS, Ong LM, Irish AB; FAVOURED study team. Updates on Baseline characteristics of the omega-3 fatty acids (Fish oils) and Aspirin in Vascular access Outcomes in RENal Disease (FAVOURED) study. *Nephrology (Carlton)*. 2016 Mar;21 (3): 217-28.
18. Young V, Balaam S, Orazio L, Bates A, **Badve SV**, Johnson DW, Campbell KL. Appetite predicts intake and nutritional status in patients receiving peritoneal dialysis. *J Ren Care*. 2016 Jun;42(2):123-31.
19. Zhang L, **Badve SV**, Pascoe EM, Beller E, Cass A, Clark C, de Zoysa J, Isabel NM, Liu X, McTaggart S, Morrish AT, Playford G, Scaria A, Snelling P, Vergara LA, Hawley CM, Johnson DW. Representativeness of Honeypot Trial Participants to Australasian PD Patients. *Perit Dial Int*. 2016 Dec 1. pii: pdi.2016.00065. doi:10.3747/pdi.2016.00065.
20. Zhang L, Lee G, Liu X, Pascoe EM, **Badve SV**, Boudville NC, Clayton PA, Hawley CM, Kanellis J, McDonald SP, Peh CA, Polkinghorne KR, Johnson DW. Long-term outcomes of end-stage kidney disease for patients with lupus nephritis. *Kidney Int*. 2016 Jun;89(6):1337-45.
21. Zhang L, Liu X, Pascoe EM, **Badve SV**, Boudville NC, Clayton PA, De Zoysa J, Hawley CM, Kanellis J, McDonald SP, Peh CA, Polkinghorne KR, Johnson DW. Long-term outcomes of end-stage kidney disease for patients with IgA nephropathy: A multi-centre registry study. *Nephrology (Carlton)*. 2016 May;21(5):387-96.

## Renal Supportive & Palliative Care

22. **Brennan FP**. The pathophysiology of pruritus – A Review for Clinicians. *Progress in Palliative Care* 2016; 24(3): 133-146.
23. **Brennan F**, Carr D, Cousins M. Access to Pain management –Still Very Much a Human Right. *Pain Medicine* 2016; 17(10): 1785-1789.
24. Scherer J, Combs S, **Brennan F**. Sleep Disorders, Restless Legs Syndrome, and Uremic Pruritus; Diagnosis and Treatment of Common Symptoms in Dialysis Patients. *Am J Kid Dis* 2016 September 29 (Epub ahead of print)
25. Aggarwal G, Davis JM, **Brennan F**, Turner K. The Sydney Institute of Palliative Medicine: evolution and contribution. *European J Palliative Care* 2016; 23(6): 285-289.
26. Foote C, Kotwal S, Gallaher M, Cass A, **Brown MA**, Jardine M. Survival of Elderly Patients with End Stage Kidney Disease Treated with Dialysis or Supportive Care Therapies: a systematic review. *Nephrology*. 2016.

## Renal Obstetric Medicine

27. Duffy JMN, van 't Hooft J, Gale C, **Brown M**, Grobman W, Fitzpatrick R, Karumanchi A, Lucas N, Magee L, Mol B, Stark M, Thangaratinam S, Wilson M, von Dadelszen P, Williamson P, Khan K, Ziebland S, McManus R. A protocol for developing, disseminating, and implementing a core outcome set for pre-eclampsia. *Pregnancy Hypertension: An International Journal of Women's Cardiovascular Health*.

28. Davis G, Roberts L, Mangos G, Henry A, Pettit F, O’Sullivan A, Homer CSE, Craig M, Harvey SB, **Brown MA**. *Postpartum Physiology, Psychology and Paediatric Follow Up Study (P4 Study) – Study Protocol*. *Pregnancy Hypertension: An International Journal of Women's Cardiovascular Health*. 2016. **6**(4):374-379

## Other

29. **Brennan F**. *Pieta*. In: Bradley R (ed) *A Matter of Life and Death*, Jessica Kingsley Publishers, London, 2016.
30. **Brennan F**. *On Complexity*. In Wojtowicz A, Malpas J. (eds) *On Human Complexity – A Colloquium*, University of Tasmania, School of Humanities, 2016.

**DEPARTMENT OF RENAL MEDICINE**  
ST GEORGE HOSPITAL  
50 MONTGOMERY STREET  
KOGARAH NSW 2217

T: 612-91132622  
F: 612-95538192

Email: [STGRenalDepartment@health.nsw.gov.au](mailto:STGRenalDepartment@health.nsw.gov.au)  
Website: <https://stgrenal.org.au/>

**RENAL RESEARCH UNIT**  
ST GEORGE HOSPITAL  
GATE 10, SHORT STREET  
KOGARAH NSW 2217

T: 612-91132484  
F: 612-91131786

